

What is Noble Matrix?

Noble Matrix is a powerful Windows™ accounting system designed for the Textiles, Clothing, Footwear & Fashion Accessory Industry and other businesses whose stock fits within the Style, Colour, Size, Season model.

Early in 1995, the first version of Noble Matrix was released. Rather than mimic other accounting systems for the fashion industry, we thoroughly researched this important industry and developed a powerful but easy to use system based on our customers' requirements.

With new customers, Noble Matrix evolved to meet their specific requirements. Today, Noble Matrix is an extremely powerful accounting system well suited to the Textiles, Clothing, Footwear & Fashion Accessory Industry.

Style/Colour/Size/Season Model

Noble Matrix caters for businesses whose stock fits within the Style/Colour/Size model. For example a specific product type, such as a shoe, is referred to a Style. This product can be stocked under many colours and sizes.

In Noble Matrix, a Style is represented in a spreadsheet-like grid called a Matrix. Each Style is broken down into multiple stock items represented by the intersection of Sizes and Colours.

Colour/Size	8	10	12	14	16
Red	2	2	4	4	2
Yellow	1	2	2	1	1
Green	4	4	8	8	4
Blue	5	7	8	4	3
Black	4	5	3	2	1

Primarily suited to the clothing and footwear industries, Noble Matrix will also suit any business whose basic stock items can be further classified into attributes. For example: Noble Matrix has been successfully implemented in the following industries:

- ✚ Plasterboard/drywall distribution
- ✚ Food including Sauces and Condiments manufacture and distribution
- ✚ Bicycle and Accessories distribution

Many other industries are suited to this model including the Timber, Carpet, Computer Software and some service based industries that rely on charging different rates for different services.

Styles

Style Details

Code: Jacket
 Title: Noble Jacket
 Group: All Products
 Tax: 10% GST
 Size Range: Ladies
 Season: Winter 05
 Due Date: 01/02/2005

Selling Prices

Wholesale: 50.00
 Trade: 70.00
 Retail: 99.00
 Boutiques: 75.00

Depart Stores: 65.00
 Export NZ: 75.00
 Export USA: 77.00
 Export Europe: 79.00

Supplier

Code:
 Name:
 Part Code:
 Designer: Mr Todd
 Fabric: 100% cotton
 Special Instructions: Hand wash only
 Care Instructions: Do not tumble dry
 Label: Bulfrog
 Make:
 Purchase UOM: Each
 Sale UOM: Each
 Status: Active

A Style is a super-stock item in Noble Matrix. It is comprised of at least one Colour and only one Size type.

All Styles are attached to Product groups, which determines what general ledger accounts, are effected by stock transactions. Similarly, each style is allocated a tax category (if applicable).

Each style is allocated to a Size type and a range of Colours. Up to 8 selling prices are available for each Style and for reporting purposes there is a Season field, 6 user-defined fields and an unlimited Details text field.

Colours

An unlimited number of colours can be attached to each Style.

Available Colours

- Brown
- Couriers Please
- Mail CALL
- TNT
- White

Selected Colours

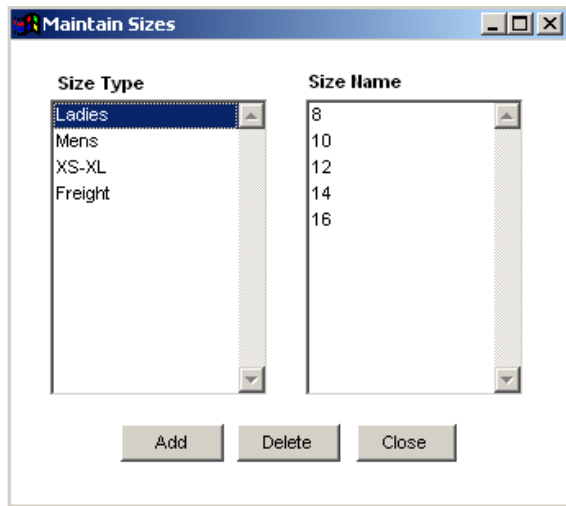
- Red
- Yellow
- Green
- Blue
- Black

Buttons: Add, Edit, Delete, Accept, Cancel

Colours can be up to 20 characters in length and can include letters, numbers and embedded spaces. You are not limited to using colours in the traditional sense. A colour in Noble Matrix is simply an attribute that is attached to a Style. In most cases the colour does not effect the price of the Style.

Sizes

Sizes are grouped together for convenience. This grouping is called a Size type. For instance, the sizes: 08, 10, 12, 14 and 16 may be collectively known as Ladies' sizes. In this way when you create a new style, you simply attach the Size type to it, rather than all the individual sizes that would normally make up that group.



Sizes can be up to 4 characters in length and can include letters, numbers and embedded spaces. You are not limited to using sizes in the traditional sense. A size in Noble Matrix is simply an attribute that is attached to a Style.

Seasons

A season in Noble Matrix is an optional attribute that attaches to a Style for reporting and querying purposes.

Seasons can be up to 10 characters in length and can include letters, numbers and embedded spaces. If your products are not seasonal, you can ignore this field.

Variable Style Pricing

Ordinarily, each style will have up to 8 selling prices, which are applicable to all combinations of colour and size. However, if you have a requirement to allocate price variances to specific combinations of colour or size, Noble Matrix can accommodate up to 3,600 pricing variations for each style.

In the above example, a Jacket sold in Navy is more expensive than Black and the smaller sizes are cheaper than the larger sizes.

Sales and Purchases

All transaction screens for purchase requisitions, purchase orders, purchase deliveries, purchase returns, purchase invoices, purchase credits, sales quotations, sales deliveries, sales returns, sales invoices and sales credits are consistent.

Customers and suppliers can be added on the fly. The search screen allows searching by account code or name or by selecting from a listing.

Existing sales and purchase documents can be reprinted, loaded and orders can be deleted.

Reports

Noble Matrix includes a powerful SQL (Structured Query Language) compatible report writer. Virtually all reports produced within Noble Matrix can be either printed or previewed on the screen.

In real time, the layout of the currently printed or previewed report can be altered and then the report reprocessed. Reports can also be exported to spreadsheets such as Microsoft Excel™.

The layout of all reports and documents (invoices, delivery dockets, pick lists etc) are fully configurable by the operator. Invoices can incorporate logos and other bitmap files, shading, lines, boxes and Windows TrueType™ fonts.

Support Network

Professional implementation, training and on-going support for your new accounting system is just as important as the software itself.

While Noble Matrix is designed for ease of use and follows familiar Windows™ conventions, there are times when external help may be required. This may be as simple as telephone assistance to talk you or your staff through a new feature, or more extensive on-site help to design a specific report you need.

Noble Matrix is represented by trained specialised dealers throughout Australia and overseas countries.

More Information

For further information please contact your authorised Noble Matrix Solution Provider or Axsapt Pty Ltd



Web: <http://www.noblematrix.com.au>

Published by Axsapt Pty Ltd, PO Box 824, Lane Cove NSW 1595. Unit F3 Lane Cove Business Park, Unit F3, 16 Mars Road, Lane Cove NSW 2066 Australia

Phone: 1300 297 278 Fax: (02) 9418 9573