

What is Noble Matrix?

Noble Matrix is a powerful Windows™ accounting system designed for the Textiles, Clothing, Footwear & Fashion Accessory Industry and other businesses whose stock fits within the Style, Colour, Size, Season model.

Early in 1995, the first version of Noble Matrix was released. Rather than mimic other accounting systems for the fashion industry, we thoroughly researched this important industry and developed a powerful but easy to use system based on our customers' requirements.

With new customers, Noble Matrix evolved to meet their specific requirements. Today, Noble Matrix is an extremely powerful accounting system well suited to the Textiles, Clothing, Footwear & Fashion Accessory Industry.

Style/Colour/Size/Season Model

Noble Matrix caters for businesses whose stock fits within the Style/Colour/Size model. For example a specific product type, such as a shoe, is referred to a Style. This product can be stocked under many colours and sizes.

In Noble Matrix, a Style is represented in a spreadsheet-like grid called a Matrix. Each Style is broken down into multiple stock items represented by the intersection of Sizes and Colours.

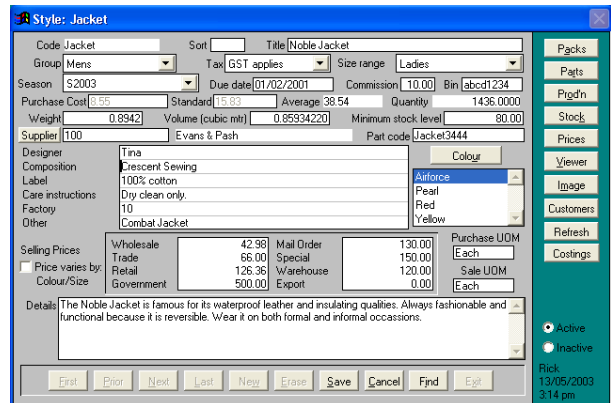
Details	Wholesale	Trade	Retail	Government	Mail
Selection	Stock On Hand	Sales Orders	Available Now		
		8	10	12	14
Airforce	20	20	40	40	
Pearl	40	40	80	80	
Red	30	60	60	60	
Yellow	70	140	140	140	

Primarily suited to the clothing and footwear industries, Noble Matrix will also suit any business whose basic stock items can be further classified into attributes. For example: Noble Matrix has been successfully implemented in the following industries:

- Plasterboard/drywall distribution
- Food including Sauces and Condiments manufacture and distribution
- Bicycle and Accessories distribution

Many other industries are suited to this model including the Timber, Carpet, Computer Software and some service based industries that rely on charging different rates for different services.

Styles



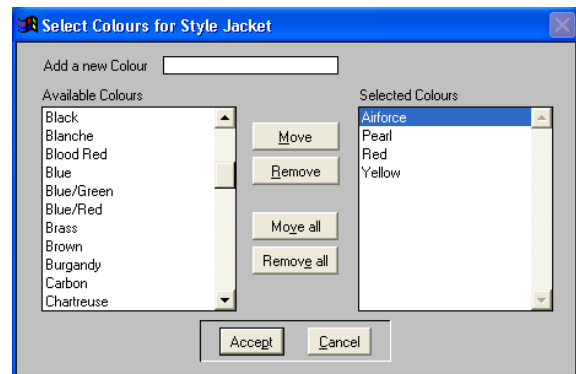
A Style is a super-stock item in Noble Matrix. It is comprised of at least one Colour and only one Size type.

All Styles are attached to Product groups, which determines what general ledger accounts, are effected by stock transactions. Similarly, each style is allocated a tax category (if applicable).

Each style is allocated to a *Size type* and a range of Colours. Up to 8 selling prices are available for each Style and for reporting purposes there is a *Season* field, 6 user-defined fields and an unlimited *Details* text field.

Colours

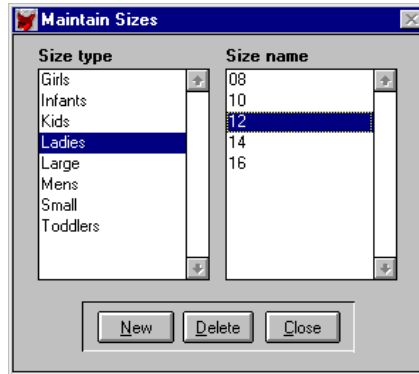
An unlimited number of colours can be attached to each Style.



Colours can be up to 20 characters in length and can include letters, numbers and embedded spaces. You are not limited to using colours in the traditional sense. A colour in Noble Matrix is simply an attribute that is attached to a Style. In most cases the colour does not effect the price of the Style.

Sizes

Sizes are grouped together for convenience. This grouping is called a Size type. For instance, the sizes: 08, 10, 12, 14 and 16 may be collectively known as Ladies' sizes. In this way when you create a new style, you simply attach the Size type to it, rather than all the individual sizes that would normally make up that group.



Sizes can be up to 4 characters in length and can include letters, numbers and embedded spaces. You are not limited to using sizes in the traditional sense. A size in Noble Matrix is simply an attribute that is attached to a Style.

Seasons

A season in Noble Matrix is an optional attribute that attaches to a Style for reporting and querying purposes.

Seasons can be up to 10 characters in length and can include letters, numbers and embedded spaces. If your products are not seasonal, you can ignore this field.

Barcodes

Noble Matrix has support for EAN barcode stock codes. EAN check digits are automatically generated and checked. For speed and efficiency, the order entry screens support keyboard wedge scanners.



Barcode tickets can be printed on most printers with native Windows™ drivers. A dedicated barcode printer is not required.

EDI & Scan-and-Pack

EDI & Scan-and-Pack

Noble Matrix is fully integrated with the EDItech EDInterpreter module to provide full EDI and Scan-and-Pack compliance with major retailers including Myer/Grace Bros.

EDInterpreter collects and prints barcoded picking slips for use with the EDItech Scan-and-Pack system. EDI orders can be automatically imported into Noble Matrix using either the scanned in quantities or the original quantities specified in the electronic order.

Transport Tracking

A full transport tracking sub-system is available. This system keeps track of freight rates by journey and weight from multiple warehouses and produces proforma invoices for checking against transport company invoices.

Carton Labels and Consignment Labels

Noble Matrix includes an option to print carton labels and consignment labels for an unlimited number of carriers. There is no limit to the number of transport carriers and their specific carrier form.

Packs

A pack is a method of grouping standard quantities of colours and sizes for specific styles. Packs are primarily used to improve data entry speed and accuracy.

Once you enter the required quantities for each combination of colour and size, you can override the pack price (which is the unit price multiplied by the number of items in the pack) or the unit price, which is picked up from the first selling price of the style. By modifying the pack price the unit price is automatically changed, and vice versa.

Packs can be setup either as Distinct Stock Items or a grouping of colours and sizes for each style.

Packs which are distinct stock items can be expanded in a Style/Colour/Size matrix on sales documents or be shown in one line.

Style Stocktake

The purpose of the Style stock take is to update the expected quantity on hand with the actual quantity verified by a physical stock take.

Entering a valid style code loads the existing stock on hand quantities (in units) and the average unit cost of this stock. Amendments are typed directly onto the grid. You can also override the unit cost if required.

Manufacturing and Production

Manufacturing and Production

The Bill of Materials is a detailed costing sub-system that accounts for the component costs of a Style, broken down by stage of manufacture and by raw material component, labour and overheads.

Component	Colour	Size	Quantity	Extended cost	Wastage
Labour - Sewing	All	All	2.00	26.00	0.00
Blue Button	Blue	All	5.00	1.15	10.00
Zipper - small	All	8	1.00	1.05	0.00

There are no limits to the stages of production, which can be setup. Each stage has both a Work in Progress and Overhead recovery account posting to the General Ledger.

The accounting methodology used is quite sophisticated enabling for proper transfers of raw materials into work in progress accounts.

As each stage of manufacture progresses, automatic general ledger journals are raised transferring costs from previous to current work in progress accounts.

New raw materials, labour and overheads are then added to the current work in progress account and then in the final stage of production all costs are transferred into finished goods.

Each stage of manufacture can have unlimited instructions which are printed on the appropriate manufacturing instruction sheets.

Job code	Started	Due	Completed	Stage
JOB0001	01/09/98	01/09/98	01/09/98	Design
JOB0001	01/09/98	20/03/99	01/09/98	Cutting
JOB0001	01/09/98	/ /	01/09/98	Making
JOB0002	01/09/98	01/09/98	/ /	Design
JOB0001	01/09/98	/ /	01/09/98	Trim
JOB0001	/ /	/ /	/ /	Dyeing
JOB0003	01/09/98	01/09/98	01/09/98	Cutting
JOB0003	01/09/98	/ /	/ /	Making
JOB0004	/ /	01/09/98	/ /	Cutting
JOB0005	01/09/98	01/09/98	01/09/98	Design
JOB0005	01/09/98	/ /	01/09/98	Cutting
JOB0005	/ /	/ /	/ /	Making
JOB0010	01/09/98	01/09/98	01/09/98	Design

The issue of raw materials, allocation of labour and overheads to each stage of manufacture is tracked.

Each production job within a stage can specify an expected completion date and optionally allocate the job to a specific customer and/or supplier/contractor.

Noble Matrix allows you to accurately calculate the required production run for each combination of colour and size for the specified style.

Variable Style Pricing

Ordinarily, each style will have up to 8 selling prices, which are applicable to all combinations of colour and size. However, if you have a requirement to allocate price variances to specific combinations of colour or size, Noble Matrix can accommodate up to 3,600 pricing variations for each style.

In the above example, a Jacket sold in Navy is more expensive than Black and the smaller sizes are cheaper than the larger sizes.

Branch Distribution

Noble Matrix supports branch distribution to chains such as Rockmans and Lowes. Each branch is linked to its head office and there are tools that enable you to quickly allocate a bulk order to the many branch stores.

Branch code	Branch name	Quantity allocated
Low01	Lowe's Chatswood	74
Low02	Lowe's Hornsby	75
Low03	Lowe's Manly	73

Interactive? Trial only Unallocated: 0

Buttons: Clear, +1, -1, Spread, Invoice, Cancel, Accept

Invoices to head office, delivery dockets to branches, consignment notes and carton labels are automatically printed.

Tools are available to "spread" a large order evenly against the distribution schedule and then fine-tune the distribution down to store level.

Remote Sales Orders for Agents

Remote Sales Orders is an optional module that allows remote entry of sales orders and stock enquiry by Agents and Salespersons. Remote sales orders are periodically transmitted to the head office system where they are processed into the central database. Agents and Salespersons can amend or create customers at remote sites and print out order confirmations on the spot.

Bulk Invoicing

The Noble Matrix Bulk Invoicing module allows you to automatically ship orders based on due delivery dates, a range of styles and stock availability.

Selection criteria

Invoice date: 30/03/1998 Customers: From: 1 To: tina Delivery dates: From: 01/04/1999 To: 01/04/1999 From style: []

Trial only Matrix output Cartons/Carriers Delivery dockets only Copies: 1

Due date	Internal reference	Customer's reference	Customer	Process
01/04/99	300025	Erik	l	Yes
01/04/99	300035	Bulk test 001	kvn	Yes
01/04/99	300038	Future	raho	Yes
01/04/99	300041	12345	467	Yes
01/04/99	xp: 300023	Tina 001	tina	Yes
01/04/99	300045	12333	raho	Yes
01/04/99	300047	La Gender	raho	Yes
01/04/99	300049	CP 001	raho	Yes

Buttons: Refresh, Process, Tag, Close, Viewer

Sales and Purchases

All transaction screens for purchase orders, purchase invoices, sales quotations, sales deliveries, sales invoices and sales credits are consistent.

Customers and suppliers can be added on the fly. The search screen allows searching by account code or name or by selecting from a listing.

Existing sales and purchase documents can be reprinted, loaded and orders can be deleted.

You can enter up to 4 lines of delivery or special instruction information, which is stored with the customer details.

Reports

Noble Matrix includes a powerful SQL (Structured Query Language) compatible report writer. Virtually all reports produced within Noble Matrix can be either printed or previewed on the screen.

In real time, the layout of the currently printed or previewed report can be altered and then the report re-processed. Reports can also be exported to spreadsheets such as Microsoft Excel™.

The layout of all reports and documents (invoices, delivery dockets, pick lists etc) are fully configurable by the operator.

Invoices can incorporate logos and other bitmap files, shading, lines, boxes and Windows True-Type™ fonts.

Security

The security system is quite sophisticated, restricting permissions to creating or viewing suppliers, customers, stock and general ledger accounts, entering orders and transactions, viewing costs and producing reports.

Modules

Noble Matrix includes Sales Orders, Deliveries, Invoicing, Credit Notes, Style Stocktake, and Standard Reports. Other required features must be purchased separately. These are available via additional modules and include:

- Purchase Orders/Invoices
- Carton Labels & Consignment Notes
- Manufacturing & Production
- SQL Report Writer/Barcode Ticket Writer
- Packs
- EDI Link to EDInterpreter/GE Integrator
- Multi User Licensing for LAN use
- Remote Sales Order (Server)
- Remote Sales Order (Client)
- Transport Tracking

Support Network

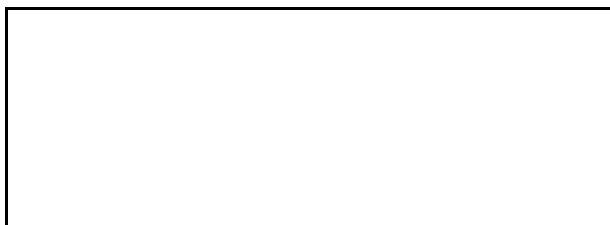
Professional implementation, training and on-going support for your new accounting system is just as important as the software itself.

While Noble Matrix is designed for ease of use and follows familiar Windows™ conventions, there are times when external help may be required. This may be as simple as telephone assistance to talk you or your staff through a new feature, or more extensive on-site help to design a specific report you need.

Noble Matrix is represented by trained specialised dealers throughout Australia and overseas countries.

More Information

For further information please contact your authorised Noble Matrix Solution Provider or Axsapt Pty Ltd



Web: <http://www.axsapt.com.au/matrix.asp>

Distributed by Axsapt Pty Ltd, PO Box 824, Lane Cove NSW 1595. Unit F3 Lane Cove Business Park, Unit F3, 16 Mars Road, Lane Cove NSW 2066

Phone: 1300 AXSAPT (1300 297 278)

Email: info@axsapt.com.au